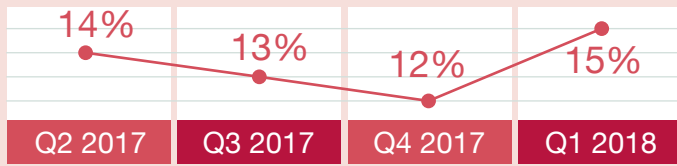
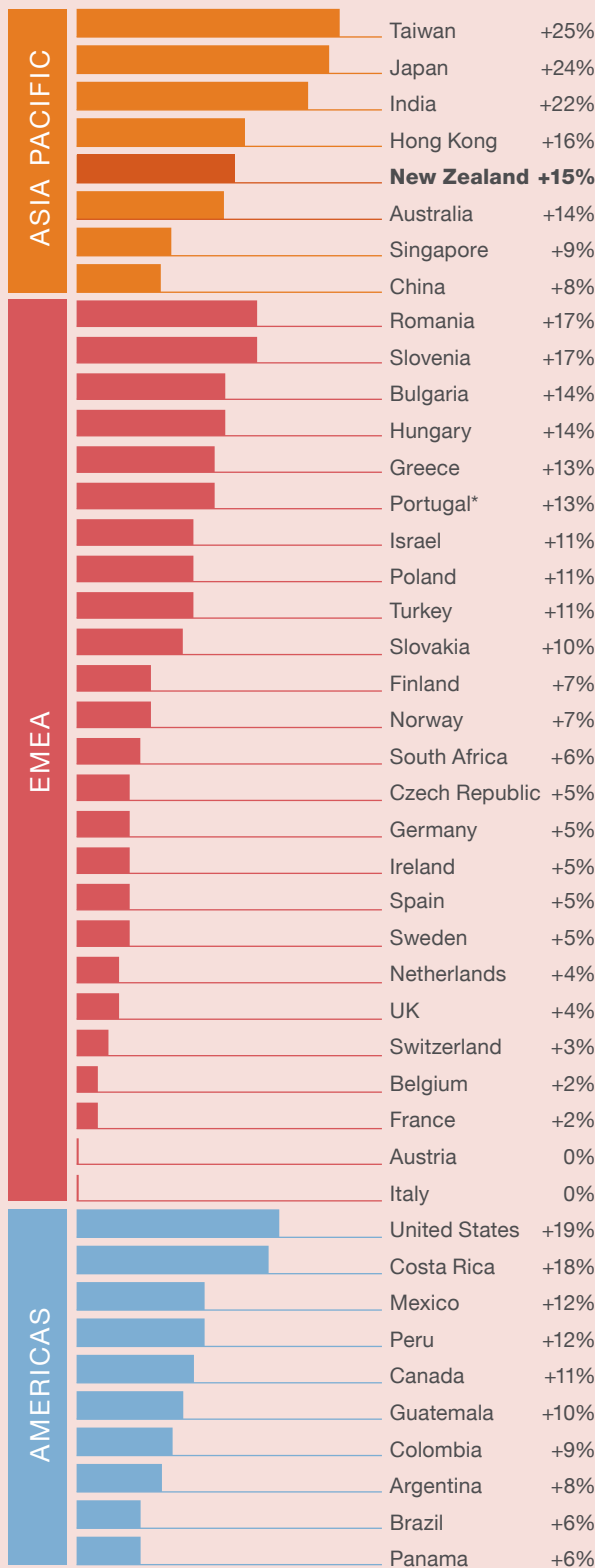


## NEW ZEALAND Q1 2018

**+15%** New Zealand's Q1 2018 Net Employment Outlook



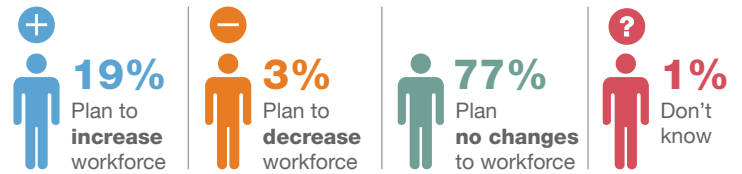
### Net Employment Outlooks



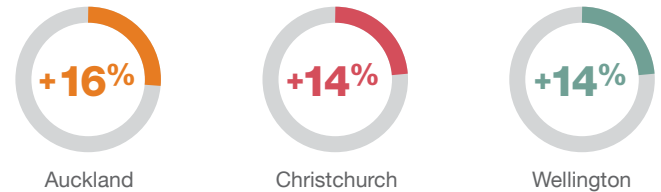
\*Indicates unadjusted data

Over **650** New Zealand employers were asked:

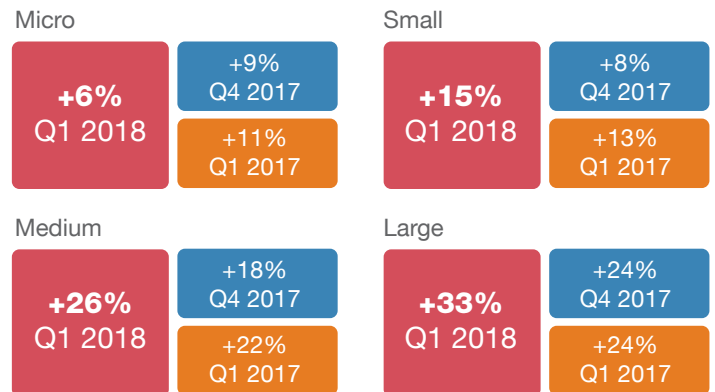
How do you anticipate total employment at your location to change in the three months to the end of March 2018 as compared to the current quarter?



### Q1 2018 Hiring intentions



### Hiring intentions via organisation size:



### Hiring intentions via sector:

