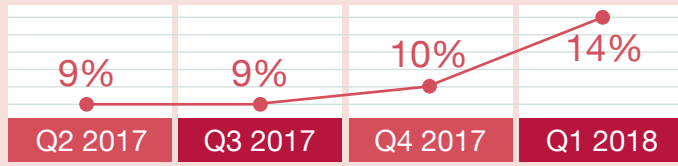
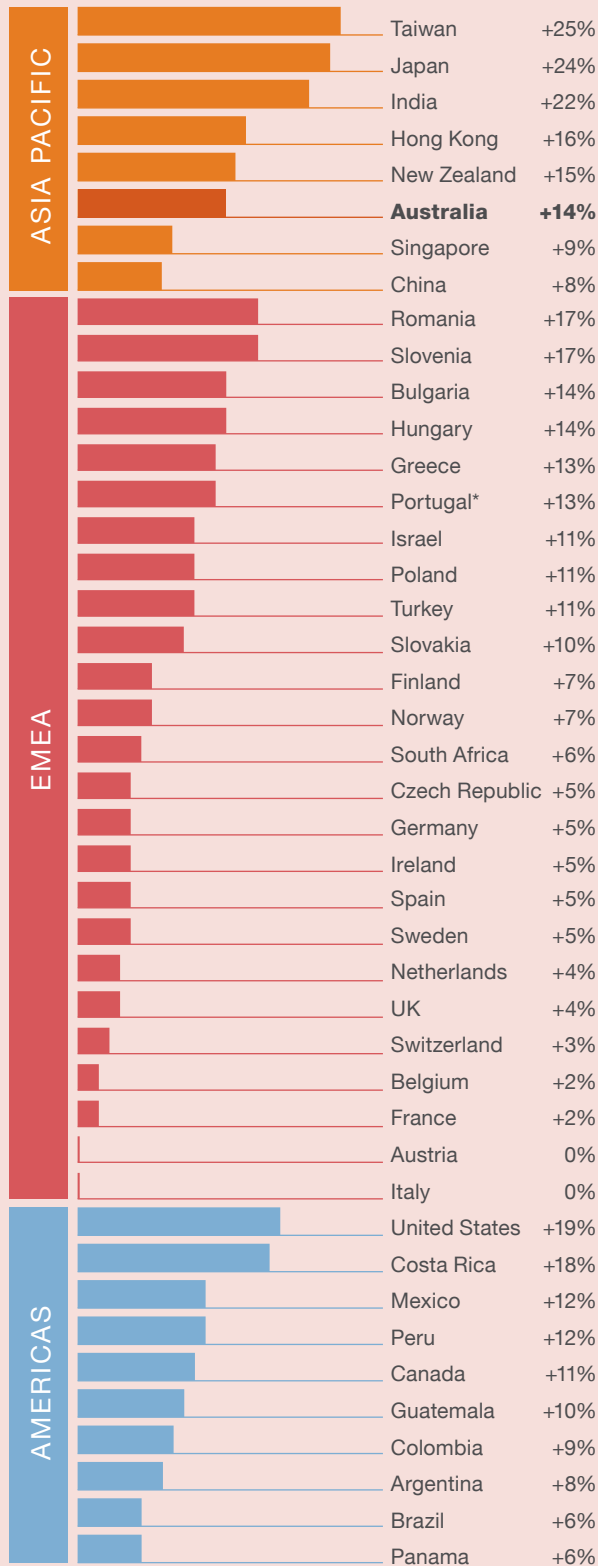


AUSTRALIA Q1 2018

+14% Australia's Q1 2018 Net Employment Outlook



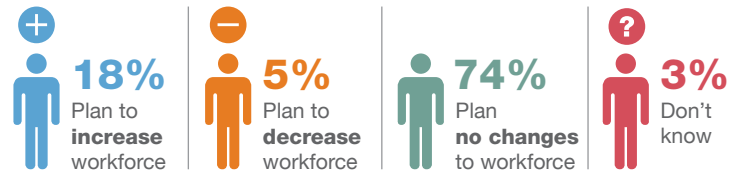
Net Employment Outlooks



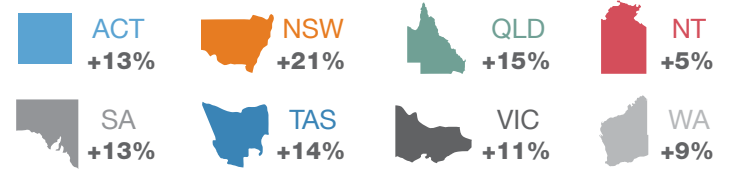
*Indicates unadjusted data

Over **1,500** Australian employers were asked:

How do you anticipate total employment at your location to change in the three months to the end of March 2018 as compared to the current quarter?



Q1 2018 Hiring intentions



Hiring intentions via organisation size:



Hiring intentions via sector:

